



AUCTION

LEADING THE INDUSTRY SINCE 1945

Thursday – May 23, 2019 – 5:30 PM

20.622 Acres Of Land – Many Possibilities!

Zoned OR & R2 – Portage County – City Of Kent – Kent CSD

Absolute auction, property sells to the highest bidder on location:

Fairchild Ave., Kent, OH 44240

Directions: From Stow take Graham Rd. (which turns into Fairchild) east. Or from Downtown Kent take N. Water St. to west on Fairchild to property. Watch for KIKO signs.

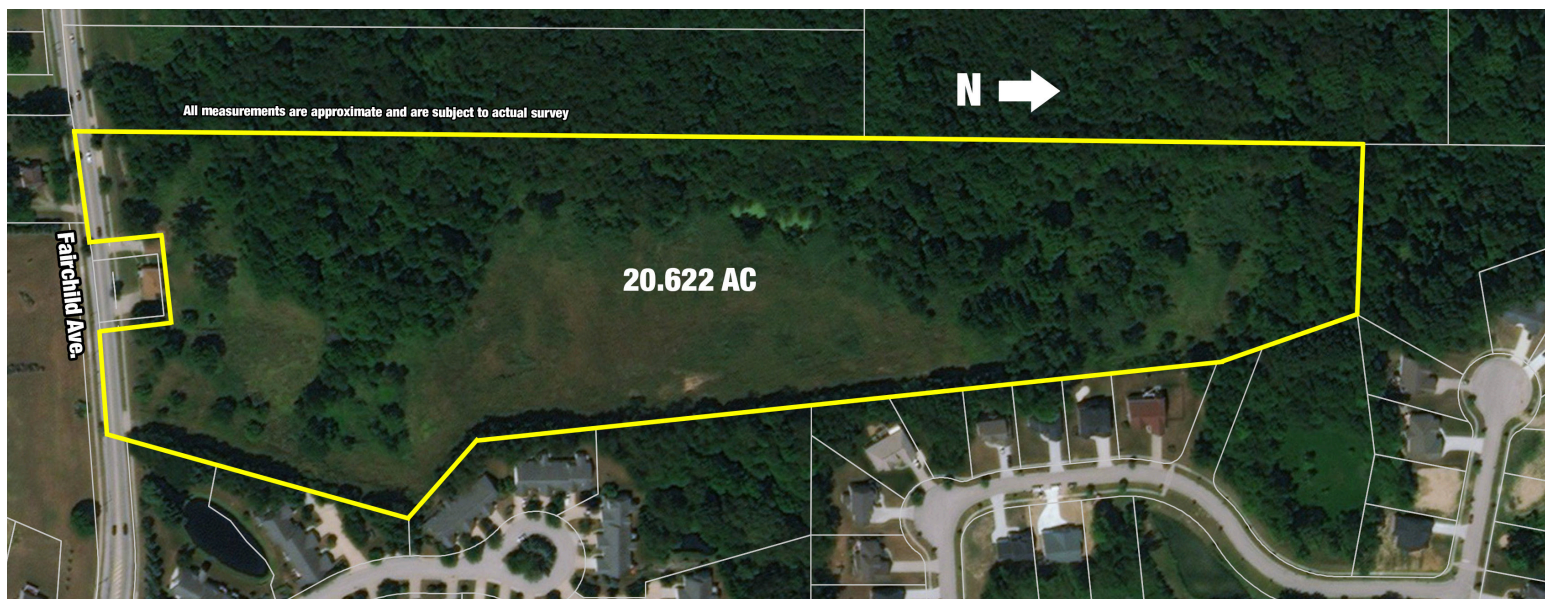


Information is believed to be accurate but not guaranteed.

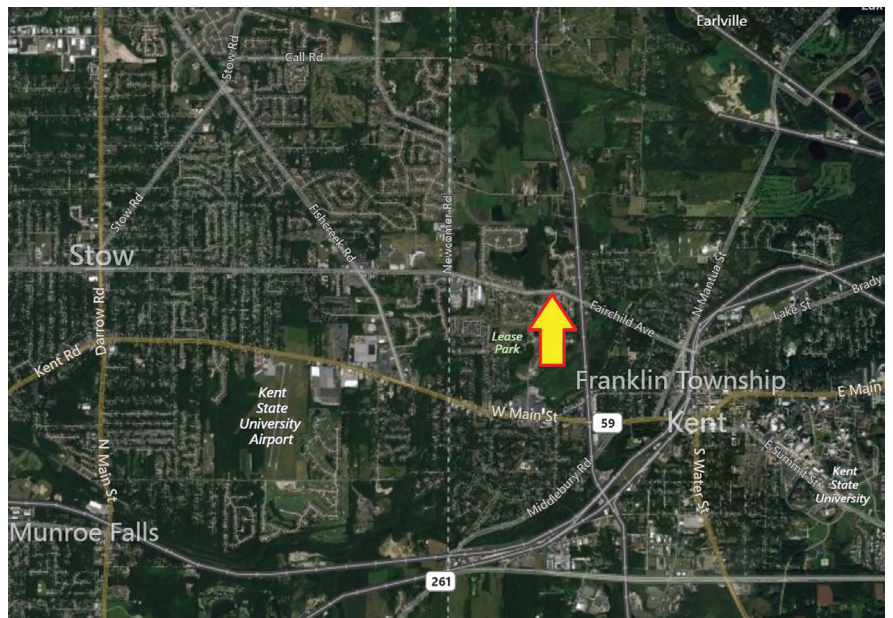


330.455.9357 • kikoauctions.com





Nice 20.622-acre property conveniently located close to Kent State University, Downtown Kent and the City of Stow. Zoned R2 single family home & OR open recreation district for many possibilities. Lot is approx. 350 x 2,079. Property is a nature lover's paradise with cleared and wooded areas plus abundant wildlife. Public utilities at the street. Parcel #17-045-00-00-017-000. All mineral interest reserved.



TERMS ON REAL ESTATE: 15% down auction day, balance due at closing. A 10% buyer's premium will be added to the highest bid to establish the purchase price, which goes to the seller. Any desired inspections must be made prior to bidding. All information contained herein was derived from sources believed to be correct. Information is believed to be accurate but not guaranteed.

AUCTION BY ORDER OF: Kevin & Lori Wingard



Auctioneer/Realtor®
BROOKS E. AMES
 330-703-2732
 brooks@kikocompany.com



Auctioneer/Realtor®
ASHLEY RITCHEY
 330-495-3474
 ashley@kikocompany.com



330.455.9357 • kikoauctions.com

